

Ntataise Lowveld



NPO.007 - 159 ETDPO153

EARLY CHILDHOOD DEVELOPMENT

“NTATAISE” (N-ta-ta-ees-se) – to lead a young child by the hand.



Education is the most powerful weapon
which you can use to change the world

- Nelson Mandela

Established in 1986, Ntataise Lowveld has been leading children by the hand and has impacted on thousands of children & practitioners through quality accredited Early Childhood Development (ECD) training and support to the less privileged in Mpumalanga.

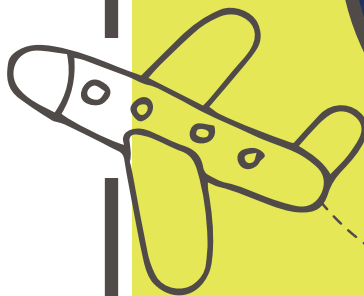
Who are we and what do we do?

We encourage and teach practitioners to stimulate rural and under privileged children through the Early Childhood Development programs aimed to promote greater success through their formal schooling.

Programmes that Ntataise Lowveld offer are:

- Level 4 ECD Seta Accredited Training Programmes (18 months)
- ECD Empowerment Programme (1 Year)
- Baby and Toddlers Programme (1 Year)
- Playgroup and Non Centre Based ECD Programmes (continuous)
- Toy and Book Libraries (continuous)

We are renowned for our Enrichment programme; making educational resources from waste material, creating a fantasy world for children to escape to, critical thinking and problem solving through our Toy & Book library, stimulating & putting smiles on Babies & Toddlers, and leaving no child behind through our Play groups.



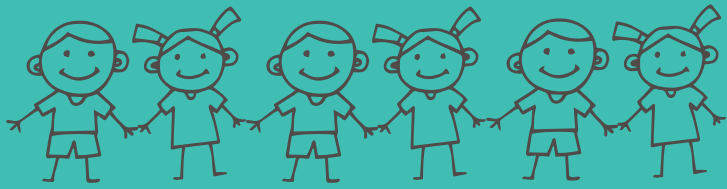
Where are we?

Ntataise Lowveld operates in the Mpumalanga Province, Mbombela and the Nkomazi municipalities of the Ehlanzeni district.

The area of reach is large, extending from the Mozambique border in the East, Mbombela in the West and South to the Swaziland border.

The demand for our specialised services is constant and growing.





Programmes run by Ntataise Lowveld: ECD courses

25 Practitioners per Trainer attend the following:

- 3 two-week Courses - Core Unit Standard Modules (Babies, toddlers & young children)
- 2 three-week - Fundamentals (Maths & Literacy)
- 5 one-week - Elective Training (HIV/AIDS, Depression & Anxiety, Conduct Interview, Special Needs and Managing an ECD Centre)

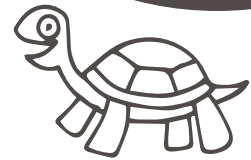
Once the practitioner has successfully completed the above courses, they will receive an ETDP SETA NQF Level 4 accredited qualification as an ECD practitioner. Training is conducted in the Nkomazi and Mbombela areas.



Workshops

Ntataise Lowveld offers 2 day Workshops each month, which includes creativity projects, songs and monthly planning based on themes. (eg Small Animals, My Family, Community Helpers, Transport, Seasons, Food, Culture).

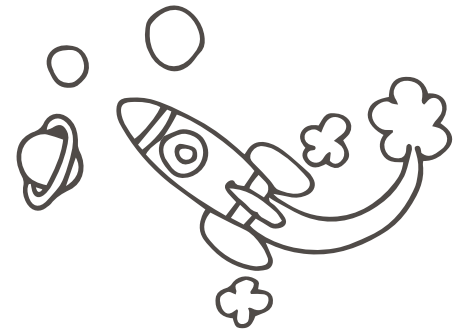
- These Workshops are designed to complement the Courses and are open to all practitioners who are on our database.
- Currently these workshops are held in Nkomazi.



Training Enrichment Programme

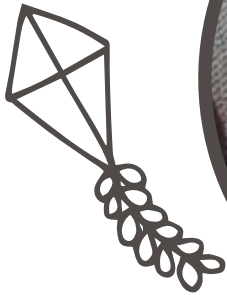
- This programme enriches 15 pre-schools per annum to become 'centres of excellence' where each practitioner is mentored by our specially trained trainer.
- Each Pre-school is also equipped with a variety of educational toys and books.

Both the Pre-school, the practitioner and the present and future children benefit enormously.



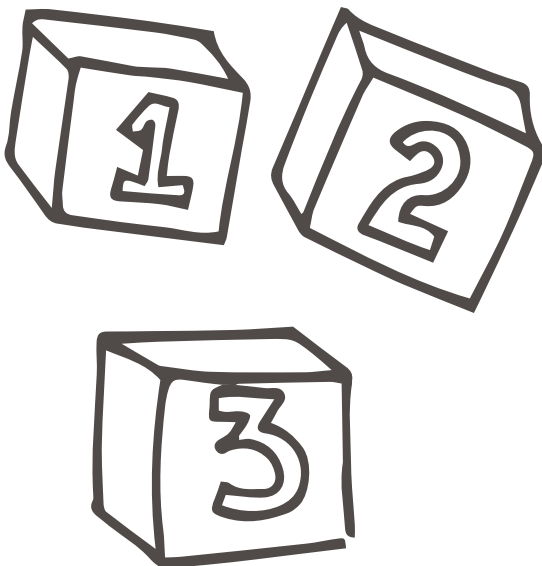
Toy and Book Library

- 30 Pre-schools and 52 Non Centre Based Play groups benefit from a wide range of educational toys and books.
- These are rotated on a quarterly basis between schools so that the children have continued access to different learning tools through active play.
- At each visit the librarians run drama and music workshops which is an amazing programme teaching both literacy, numeracy and life skills.
- The librarians ensure that practitioners are aware of each educational toy's different outcomes and particularly concentrate on puzzle building as it is one of the most important foundation skills for early maths, science, life skills and language.



The Future of Ntataise Lowveld

- To extend the reach of the organisation to reach more than 400 000 children in the next 5 years.
- To establish a dedicated training centre.
- Our dream is to touch and enrich the lives of even more children, toddlers and babies.
- To provide them with the important building blocks of education and through our programmes help eradicate the vicious cycle of poverty.



Babies and Toddlers

Babies, Toddler's and Young Children skills development training and early stimulating programme which focusses on:

- Improvised educational resources making workshop
- Creating a conducive Environment for Babies, Toddlers and Young Children
- Care and Understanding of Babies, Toddlers and Young Children.
- Demonstrate basic understanding of child development.
- Maintaining records of Babies, Toddlers and Young Children.



Non-centre based Playgroups

Ntataise Lowveld believes that a child's socio economic status should not determine their future; hence the inception of our Play-Group Programme in the Nkomazi and Mbombela areas.

- This programme targets the very marginalized in the community, those young children who cannot easily access formal ECD centres.
- This is a community based program that is run and owned by the community with our help.
- Unemployed women are trained by Ntataise Lowveld on basic ECD principles in order for them to pass this knowledge onto the children.
- A healthy meal is supplied by Ntataise Lowveld to ensure that these children can learn optimally.
- Play groups are held three times per week.



Home Visit Reading Programme

Reading in the early years helps with language growth, early literacy and reading achievement in the formal school years. We visit selected homes to read out loud with young disadvantaged children and engage primary caregivers in the reading process to ensure that reading continues.



Parenting Programme

We offer parenting programme to community members to equip them with positive parenting skills which include Family Relations, Health, Nutrition, Child Safety & Protection, Positive Discipline & Grief & Bereavement. This builds Confidence and Physical, Social and Emotional Development through Creative Play, which includes Intellectual & Language Stimulation.



Skills Development Training

Babies, Toddlers and Young Children Early Stimulating Programme which focusses on:

- Improvised educational resource making workshops
- Demonstrate basic understanding of child development
- Care and understanding of babies, toddlers and young children
- How to Interact with babies, toddlers and young children.
- Preparing a safe and stimulating environment inside and outside premises
- Maintaining records of children's development and giving timeous reports



Contact details:

Tseli Scharer
Director

@ info@ntatlowveld.org.za

☎ 013-758-2267

☎ 071-8686-323